



GAT MONTHLY MEMBERSHIP PROGRESS REPORT

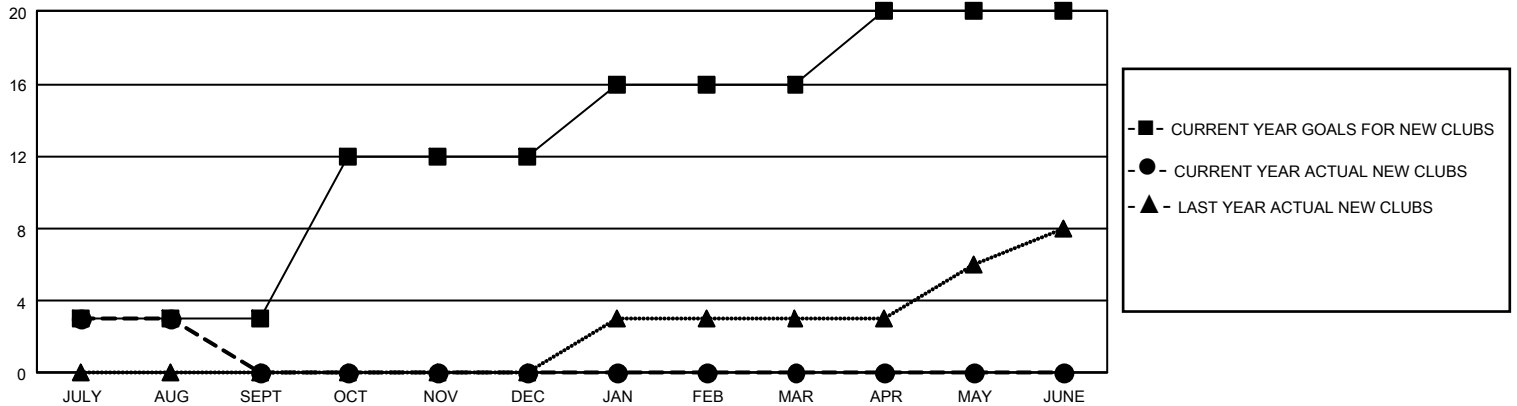
Results as of: 8/31/2025

GMT Constitutional Area 2, Group B

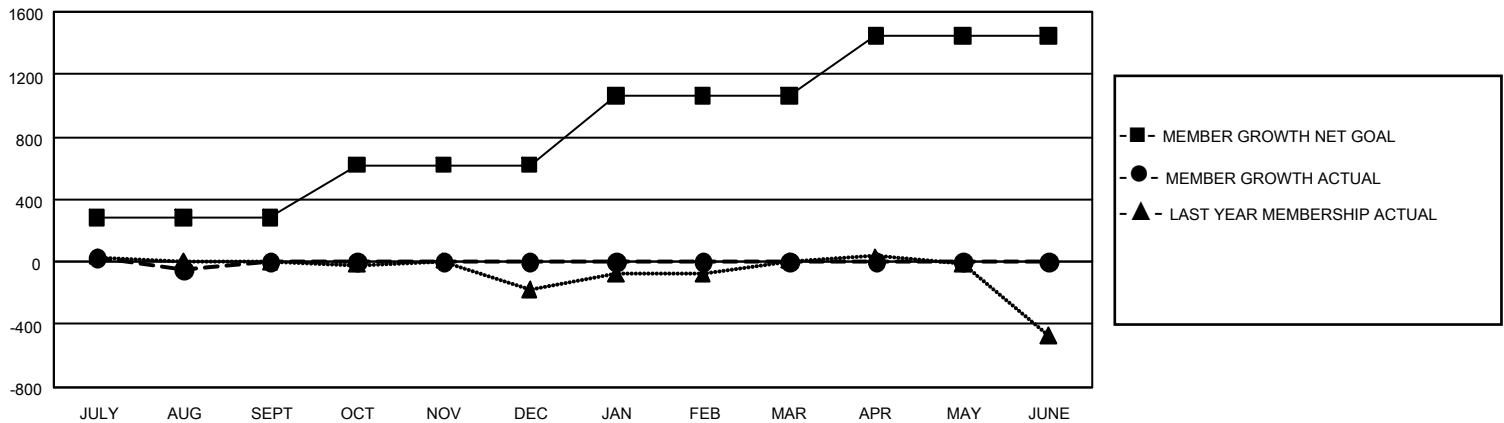
REPORT DOES NOT INCLUDE CLUBS IN UNDISTRICTED AREAS.

Clubs				Members			
RESULTS FOR 2025-2026				RESULTS FOR 2025-2026			
QUARTER	NEW CLUB GOAL	NEW CLUBS	DROPPED CLUBS	QUARTER	MEMBER GROWTH NET GOAL	MEMBER GROWTH ACTUAL	DROPPED MEMBERS ACTUAL (including transfers)
JULY/AUG/SEPT	9	3	2	JULY/AUG/SEPT	281	290	274
OCT/NOV/DEC	27	0	0	OCT/NOV/DEC	339	0	0
JAN/FEB/MAR	12	0	0	JAN/FEB/MAR	441	0	0
APR/MAY/JUNE	12	0	0	APR/MAY/JUNE	385	0	0

GOALS AND ACTUAL NEW CLUBS CUMULATIVE



GOALS AND ACTUAL MEMBERS CUMULATIVE



DROPPED CLUBS: 2

84 CLUBS OF 675 ADDED 1 OR MORE NEW MEMBERS

GENDER DISTRIBUTION

MALE	9,431 (60.49%)
FEMALE	6,151 (39.45%)
NON BINARY	1 (0.01%)
PREFER NOT TO ANSWER	9 (0.06%)

DROPPED MEMBERS

DECEASED	39
CLUB CANCELLED	5
OTHER	224
TOTAL	268

[CLICK HERE FOR CUMULATIVE MEMBERSHIP DATA](#)

TOTAL FAMILY UNIT MEMBERS	2,851
FAMILY MEMBERS PAYING HALF DUES	1,469